

# MOTOR SHAFT GROUNDING PRODUCT LIST



## **Standard Motor Shaft Grounding Module (Part # 210500)**

The Standard MSGM is the go-to solution for preventing premature bearing failure due to VFD induced shaft voltages. This model is typically used on motors over 1 HP but is also very effective on fractional HP motors where there is installation room. For higher HP applications or for motors in critical infrastructure or dirty environments, multiple MSGMs can be installed.

Aluminum Bronze construction, copper graphite brush

Footprint = 36mm x 42mm x 10mm



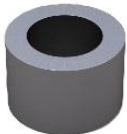
## **Mini Motor Shaft Grounding Module (Part # 210140)**

Where mounting space is tight, the Mini MSGM is an excellent choice for mounting on fractional HP motors. This module offers the same type of protection and is an effective alternative to the MSGM Standard on smaller motors. Footprint = 19mm x 34mm x 5.5mm



## **Standard Motor Shaft Grounding Spacer Plate (Part # 200545/200554)**

Sized specifically for the Standard modules, the spacer plate allows you to get your MSGM in the right spot on the motor shaft. They produce professional looking installations in a fraction of the time. Never hand make a spacer again. Comes in 5mm and 2mm thickness versions.



## **Standard Motor Shaft Grounding Cylinder Spacer (Part # 210060)**

Use a Cylinder Spacer for precise spacing away from the endbell when a flat spot for the MSGM isn't present. Add spacers in a series for creating just about any clearance.



## **Mini Motor Shaft Grounding Spacer Plate (Part # 200546)**

When space and time are a premium, MSGM Mini spacers get the job done. No more whittling spacers. Consistent professional installations every time. Save time and money!



## **Standard Motor Shaft Grounding Extension Plate (Part # 200542)**

When the only place to mount to the motor endbell is further away from the shaft, Extension plates off a great solution. Pre-tapped to bolt securely to standard modules.

**Aaki Corp.**

*A Better Way*

Grounding Solutions

Calgary, Alberta, Canada Phone: 1-888- 899-AAKI (2254) [info@aaki.ca](mailto:info@aaki.ca) [www.aaki.ca](http://www.aaki.ca)



## Mini Motor Shaft Grounding Extension Plate (Part # 200544)

Sized specifically for the mini modules. For non-typical configurations. Pre-tapped and slotted to solve any application.



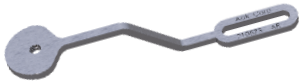
## DrillBuddy™ MSGM Installation Tool (Part # 200547)

Save time and money on the installation of your motor shaft grounding module with this simple but effective tool. Simply place it on the shaft, drill the holes, and mount the module. A must have for every field technician.



## FleXmount™ Bracket (Multiple Variations of Part)

FleXmount™ brackets offer the ultimate solution for mounting a MSGM to almost any motor geometry. Simply select a bracket that works best for your motor, make a few bends and bolt it to the endbell. In no time at all, you will have a professional result that fits perfectly every time.



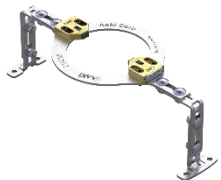
## FleXmount™ Arm (Multiple Variations of Part)

FleXmount™ arms like the brackets, offer the ultimate solution for mounting a MSGM to almost any motor geometry, but work independently of the other, allowing the user to set the angle to anything. Simply select a pair of arms that works best for your motor, make a few bends and bolt it to the endbell. When formed, the arms will hold the MSGM exactly where it needs to be.



## FleXform™ Tool (Part #400140)

The FleXform™ Tool takes the guesswork out of bending FleXmount™ brackets. Simply dial in your required bend angle, align the bracket, squeeze the handle and you have a precise, consistent bend every time. Brackets or Arms can be formed to fit almost any motor endbell in about 3-5 minutes. The FleXform™ Tool comes with FleXmount™ brackets or arms to practice with and ships complete with dies and bend dial installed and calibrated. Cut your installation time to minutes with the FleXmount™ system.



## VerTmount™ Bracket (Part # 210035)

The VerTmount™ Grounding Bracket Kit takes out the effort and guesswork when mounting your Motor Shaft Grounding Modules on vertical hollow shaft motors. Kits are designed to bolt directly onto the motor endbell. No drilling holes in the motor! The entire kit fits under the motor dust cover, making it easy to install and maintain. Kits are available for several motor horsepower.

**Aaki Corp.**

*A Better Way*

Grounding Solutions

Calgary, Alberta, Canada Phone: 1-888- 899-AAKI (2254) [info@aaki.ca](mailto:info@aaki.ca) [www.aaki.ca](http://www.aaki.ca)